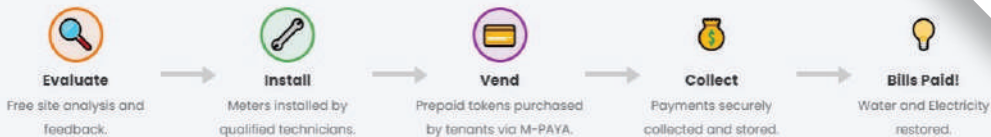
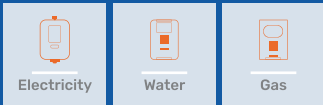




PRODUCT CATALOG

Prepaid submeters:

the Future of Energy, Today



SELF-SERVICE OPTIONS

DIAL *483*320# OR VISIT PREPAID.KE | 📞 0709058012 | 📱 0798875035



SINGLE-PHASE KEYPAD INTEGRATED PREPAID METER

FEAUTRES

- Count-down displayed as electricity is consumed, giving clear view of number of units left
- Industry standard wall-base mounting
- Integrated numeric keypad
- 48,5 mm x 18,5 mm liquid crystal display (LCD) screen
- Current reverse monitoring
- Internal self-check system
- Alarm indicator
- Standard Transfer Specification- (STS) compliant encryption
- Anti-tamper sensor locks the meter
- Easy installation
- Current range: 5 A to 80 A
- Single phase voltage 220 V, 230 V, 240 V
- Temperature range -25 °C to 55 °C
- Humidity range up to 95%
- IP54 protection
- Accuracy: Class 1(IEC)/class B(MID)
- Indicators: active energy, credit status and alarm
- Easy installation
- Current range: 5 A to 80 A
- Single phase voltage 220 V, 230 V, 240 V
- Temperature range -25 °C to 55 °C
- Humidity range up to 95%
- IP54 protection
- Accuracy: Class 1(IEC)/class B(MID)
- Indicators: active energy, credit status and alarm

KEY BENEFITS

For Property Owners

- Easy control of electricity bills
- Reduced administration and risk
- Quick installation and registration
- Improved cash flow
- Prevent bill disputes

For Tenants

- Convenient token purchase options available such as our USSD code, M-PESA Paybill
- Help desk support available every day to help with prepaid metering issues
- Better usage awareness helps tenants reduce their electricity consumption
- No unexpected large bills at the end of the month

SPECIFICATIONS

Type: Single-phase electronic prepaid meter.

- Voltage: Typically operates within a certain voltage range, like 220-240V.
- Current: Designed to handle specific current levels, e.g., 5-40A.
- Accuracy: Measurement accuracy, usually expressed as a percentage.
- Communication: Features for data transmission, such as SMS, RF, or powerline communication.
- Display: Digital or LCD screen for showing usage and balance.
- Prepaid Functionality: Ability to accept and manage prepaid credits.
- Protection: Includes safety features like overload protection and surge protection.
- Installation: Details on how it should be installed, such as mounting options.
- Compliance: Adherence to relevant standards and regulations.



SINGLE-PHASE DIN-RAIL PREPAID METER WITH WIRELESS CIU

KEY BENEFITS

- Simple and convenient monitoring of electricity usage.
- Easy at-home recharging without direct access to the meter.
- Reduces tampering risk by separating the user from the metering device

SPECIFICATIONS

| | | |
|--------------------------------|---|--|
| Application | | Direct connection |
| Accuracy | Active | Class 1 or 2 (IEC), Class A or B (MID) |
| Voltage | Reference voltage | 110-127V, 220-240V |
| | Operating voltage range | 70%-120%Un |
| Current | Basic current | 5A, 10A |
| | Maximum current | 60A, 80A, 100A |
| | Starting current | ≤0.4%Ib |
| Frequency | | 50Hz or 60Hz |
| Temperature | Operation range | -25~55 |
| | Limit range for storage and transport | -40~70 |
| Humidity | | Up to 95% non-condensing |
| Power Consumption | Power consumption in voltage circuit (active) | ≤2 W |
| | Power consumption in voltage circuit (apparent) | ≤10 VA |
| | Power consumption in current circuit | ≤1 VA |
| Insulation Strength | AC voltage test | 4kV during 1min |
| | Impulse voltage test | 1.2/50μs mains connections 6kV |
| EMC | Electrostatic discharges(Contact discharges) | 8kV |
| | Electrostatic discharges(Air discharges) | 15kV |
| | Surge immunity test | 4kV |
| | Fast transient burst test | 4kV |
| | Electromagnetic RF fields (80MHz to 2000MHz) | 10V/m(with current), 30V/m(without current) |
| Connection Terminals | | ∅ 10mm |
| Housing | Protection degree | IP51 |
| | Meter cover | Opaque PC+ glass fiber with a transparent window |
| | Meter base | Opaque PC+ glass fiber |
| Communication Interface | Optical communication | DLMS/COSEM |
| | PLC alternative | HX645 |
| Weight | Net weight | Approx.0.31kg |
| | Package | Approx.0.08kg |
| Dimension | | 138mm×83mm×48mm |
| Standard | | IEC62052-11, IEC62053-21, IEC62055-41, IEC62055-51, IEC62056-21, IEC62056-46, IEC62056-53, IEC62056-61, IEC62056-62, EN50470-1, EN50470-3 |



THREE-PHASE PREPAID METER

The HXE310-KP is a three-phase prepayment meter designed for secure revenue collection and user convenience.

KEY FEATURES

- Prepayment functionality for secure revenue collection.
- Compliance with the STS prepayment standard for reliable credit token entry and compatibility with existing vending systems.
- DLMS/COSEM protocol for interactive operation.
- Robust mechanical design to prevent tampering.
- User-friendly keypad and LCD display.
- Various recharge methods compatible with STS systems.
- Internal relay with multiple control options.
- Simple short key codes for easy access to basic functions.
- Event recording and features for balance refund and registration cancellation.

HOW IT WORKS

- Measuring Unit: Handles voltage and current sampling, and measurement.
- Data Processing Unit: Contains the microcontroller and memory.
- Power Supply Unit: Provides both AC and battery power.
- Display Unit: Features an LCD screen.
- Communication Unit: Supports optical and PLC communication.
- Load Control Unit: Manages relay control.

SPECIFICATIONS

| Parameter | Specification |
|-------------------------------|--|
| Reference voltage | 3x230/400V |
| Working voltage | 70%Un~120%Un |
| Reference current | 5A |
| Maximum current | 100A |
| Accuracy class | Class 1 (Active) |
| Pulse constant | Active: 1000 imp/kWh |
| Frequency | (50±5)Hz |
| Temperature | Working temperature range: -25°C~+60°C Store temperature: -40°C~+70°C |
| Humidity | ≤95% |
| Voltage circuit consumption | ≤2W, 10VA |
| Current circuit consumption | ≤1VA |
| Starting current | 4%Ib |
| Protection class | IP54 |
| Fast transient burst | 4kV |
| Electrostatic discharge (ESD) | Contact discharge: ±8 kV. |
| Insulation | Air-gap discharge: ±15 kV |
| Impulse voltage | 4kV, 50Hz, 1min. |
| Surge | 6kV |
| Over voltage | 4kV 440VAC, 48hrs |



PREPAID WATER METER

FEATURES

- Size varies by Diameter Nominal 15, 20 and 25
- Standard Transfer Specification compliant and operates with token codes
- Tamper prevention
- Up to 300 meters wireless connection with the CIU keypad
- Auto shut off when credit finishes
- Long battery life up to 6 years
- User friendly wireless keypad

KEY BENEFITS

- Quick and easy installation.
- Flexible payment options for recharging
- Tamper prevention
- Vending software is flexible for settings
- Remote reading and valve control on / off

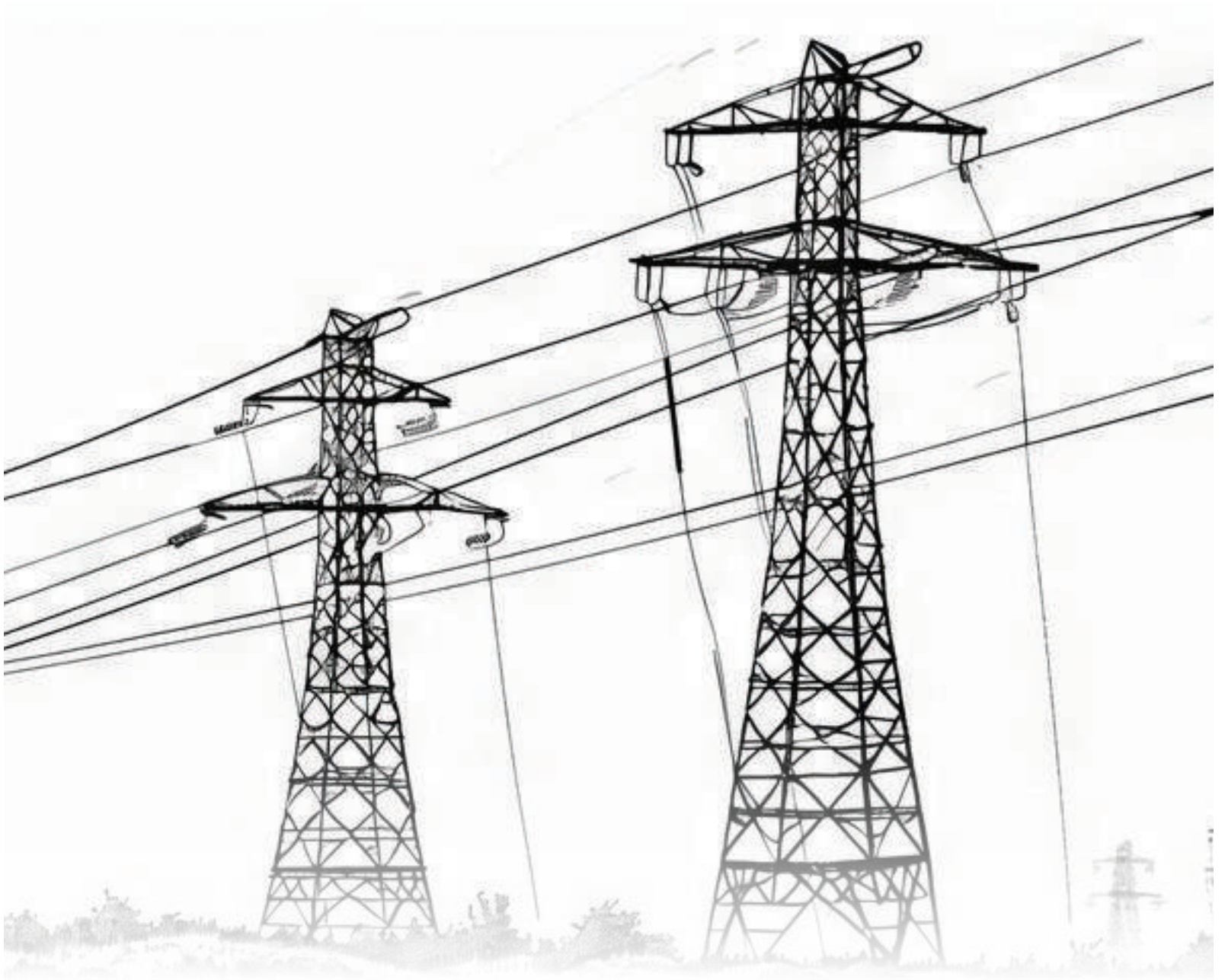
SPECIFICATIONS

| Nominal size | Dn | mm | in-line | | |
|------------------------|-----------|---------|---------|------|--------|
| | | | 15 | 20 | 25 |
| Maximum flow rate | Q_4 | m^3/h | 3.125 | 5.0 | 7.875 |
| Ratio "R" | Q_3/Q_1 | | 80 | 80 | 80 |
| Permanent l flow rate | $Q_3/3$ | m^3/h | 2.5 | 4.0 | 6.3 |
| Transitional flow rate | $Q_2/2$ | | 0.05 | 0.08 | 0.126 |
| Minimum flow rate | $Q_1/1$ | | 0.031 | 0.05 | 0.0787 |
| Minimum reading | | m^3 | 0.0005 | | |
| Maximum reading | | | 99999 | | |

DIMENSION

| Nominal size | Length | Width | Height | Connecting |
|--------------|--------|-------|--------|------------|
| mm | | | | D |
| 15 | 165 | 99 | 104 | G3/4B |
| 20 | 195 | 99 | 106 | G1B |
| 25 | 225 | 103 | 114 | G1-1/4B |





CONTACT US

 **0709 058 012**

 **0798-875-035**

 **sales@m-payaenergy.co.ke**

 **www.m-payaenergy.co.ke**

 **Trio-Complex Center, Exit7, Off Thika Rd (Next to EABL),
Nairobi, Kenya**

**Mombasa: Greenland Mall (Besides Judan Mosque)
Taita Street, Off Digo road**

Eldoret: Zion Mall, 1st Floor Malaba Rd, Eldoret

SCAN ME



m-paya
ENERGY

